

MCB 458: BASIC HUMAN PATHOLOGY

Spring Only: 3Hrs

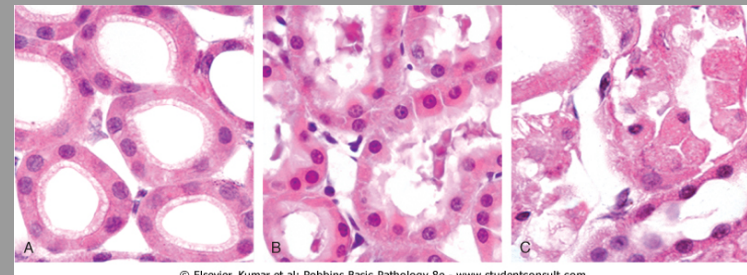
Instructor: Gregory Freund M.D., Prof. of Pathology, UIC College of Medicine

Coordinator: Alejandra Stenger

Course Description: Introduction to the basic mechanisms of human disease with a focus on the building blocks of pathological processes at the sub-organismal and organismal level. Basic biological processes will be stressed including tissue adaptation, injury, inflammation, repair and neoplasia. Pathology synthesizes cellular and molecular biology, biochemistry and immunology holistically so as to understand the body's limited terminal responses to the cornucopia of experienced physiological insults.

Prerequisite: MCB 354 or equivalent, or consent of instructor.

Course Restriction: Enrollment in this course is restricted to MCB and BIOC majors



© Elsevier. Kumar et al: Robbins Basic Pathology 8e - www.studentconsult.com